

## CUMULUS Lamp



### MATERIALS & METHOD

Glo-Flex®, Stavellan Inc.

Velcro® Ultramate®

Modular construction

Light 7W Electricity saving fluorescent bulb

### DIMENSIONS/PENTAGON

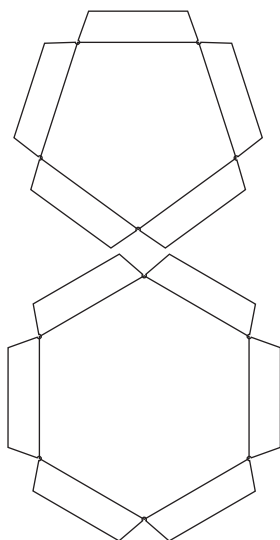
Length 165 mm

Width 153 mm

### DIMENSIONS/HEXAGON

Length 176 mm

Width 183 mm



### DESCRIPTION

—CUMULUS This modular lamp is contemporary study of two materials- both placed in a foreign context. The reflective and semitransparent material delivered by the Philippine company Stavellan Inc. uses this material as never before. The light is deflected in six directions within a sphere, and diffuses the light in a spectacular manner, creating an optical illusion. The use of Velcro® Ultramate® as a joining mechanism, creates an extremely rigid framework as together it forms the skeletal structure for light diffusion. The aesthetic of the light has been inspired by clouds, as there is no limit to how this system can be arranged. Yet again, Cumulus is a reflection of Jansson's geometric interpretation of the organic environment.